

E-DLD Newsletter: Summer Edition

E-DLD in numbers



How many members?
419 members:

- **314** parents of children with DLD
- **105** individuals over 16

Average age:

- **7.91** years for children and
- **36.7** years for adults



Where from?

- **66%** from the UK
- **34%** from **23** other countries.



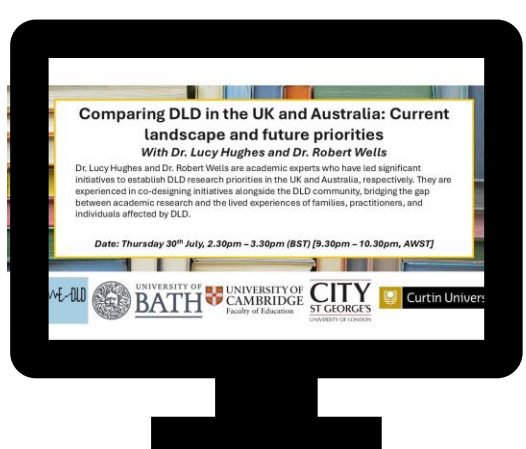
Research studies

86 research studies have been advertised, and we have summarised over **130** research papers.

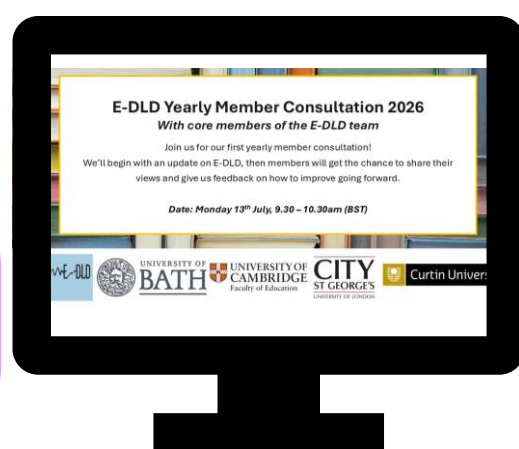


Yearly survey

13.6% have completed a yearly survey. We offer a monthly **£20 voucher prize draw** for E-DLD members who complete it!



**Upcoming
E-DLD
Events:**



E-DLD Yearly Member Consultation 2026

Monday 13th July at 9.30 AM (BST)

Join us for our first yearly member consultation! We'll begin with an update on the E-DLD project, then members will get the chance to share their views and give us feedback on how to improve going forward.

[Click this link to sign up for a ticket!](#)

[Click this link to preview the presentation slides](#)

Comparing DLD in the UK and Australia

Thursday 30th July at 2.30PM (BST)

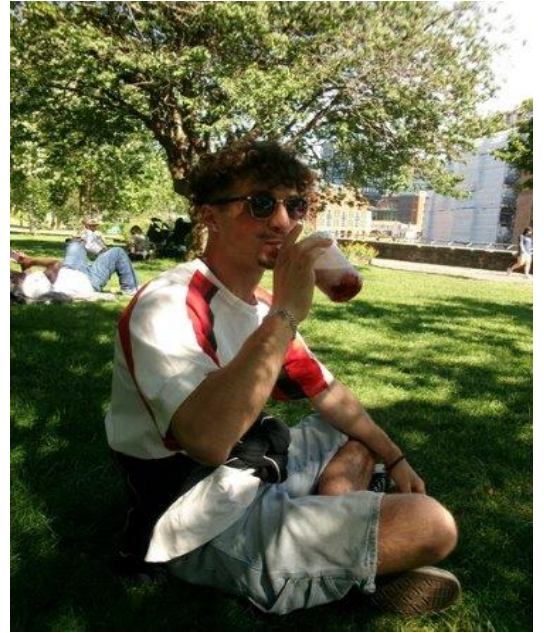
Join Dr. Lucy Hughes and Dr. Robert Wells on July 30, 2026, for an insightful joint presentation comparing Developmental Language Disorder (DLD) across the UK and Australia. This session explores the current state of DLD in both regions and highlights key priorities moving forward.

[Click this link to sign up for a ticket!](#)

Get to know the new addition to our team...

Ben Greenwood

Hi E-DLD members! My name is Ben, and I am currently studying MSc Health Psychology at the University of Bath. I am joining E-DLD for the summer as a placement student. Outside of work, I enjoy playing rugby and staying active. I also love doing art and playing the drums.



Why did you choose E-DLD for your placement?

I chose the E-DLD project for my placement because when I first heard about DLD I was curious about what it was, because it is a condition that is not well known across society. Given my interests in health inequalities and public health, I became intrigued about how those with language disorders are affected by the current state of the healthcare system. Learning from the literature about their lived experiences in education and healthcare helped me appreciate the challenges that language disorders cause in everyday life. Additionally, as a person with a history of expressive language problems in early childhood, this motivated me to raise awareness of DLD to improve health outcomes.

What is your role in the E-DLD team?

My role entails managing data, helping with participant recruitment and data collection, and help with creating social media content to expand recruitment and raise awareness of DLD.

What are you looking forward to as part of the E-DLD team?

I am most excited about building my communication skills when engaging with those diagnosed with DLD. I am eager to learn from the research team about DLD and contribute to raising awareness of DLD to wider society.



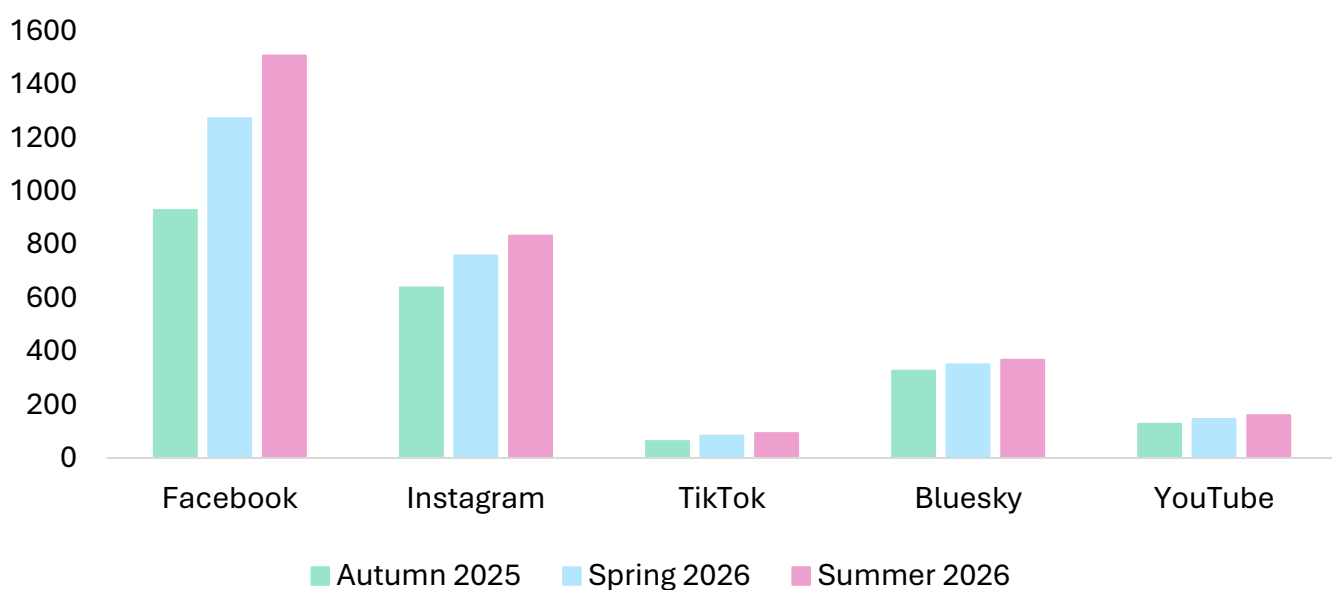
SOCIAL MEDIA UPDATE!

We are continuing to grow our social media platforms, with over 800 followers gained since Autumn 2025!

CHECK OUT OUR YOUTUBE!

On our YouTube channel, we post recordings of our online E-DLD events, so you can catch up anytime, anywhere!

Social Media Followers



RESEARCH SUMMARIES

We upload short 5-minute research summaries to our YouTube to complement the research summaries on our website.

These videos make learning about DLD research accessible and easy!

RESEARCH ADVERTISEMENTS

Follow us across our social media platforms to find out about research studies which are looking for participants

These are chances for you to get involved in research that can benefit you and the wider DLD community.



Study updates!

1. Validating the STAND

We are about to submit this first paper, detailing the development of the Screening Tool for Adults with Non-Diagnosed DLD.

2. Strengths of children with DLD

This paper is comparing the strengths of children with no language difficulties and children with DLD. We found that creativity and kindness came up more frequently as characteristics of children with DLD compared to children with no language difficulties.

3. How do young children use language?

Rose is currently recruiting participants for her undergraduate dissertation study which aims to help better understand children's language and improve support for children with DLD. Please sign up [here](#).

4. The lived experiences in healthcare for adults with DLD

The aim of this study is to understand the lived experience of interacting with medical professionals in healthcare settings from adults with DLD. It aims to understand what can help support their needs and what did not help from their experiences in healthcare. Currently, the study is waiting for ethical approval.



Feel alone in supporting your child with DLD?
Consider joining the "Developmental Language Disorder (formerly SLI) Support" group on Facebook. This is a private group for people affected by a DLD diagnosis, including adults with DLD and parents like you!

Have you heard of The DLD Project?
They have collected a load of evidence-based information and resources – check it out here: <https://thedldproject.com>

Follow us on our social media:



@Engage with DLD



@engage_dld



@engage.with.DLD



@edldproject.bsky.social

Subscribe to our YouTube channel:



@engagewithdld7150



Engage with
Developmental
Language
Disorder



UNIVERSITY OF
BATH



UNIVERSITY OF
CAMBRIDGE
Faculty of Education

CITY
ST GEORGE'S
UNIVERSITY OF LONDON



Curtin University

