

E-DLD AND SPEECH & LANGUAGE THERAPY/PATHOLOGY: WORKING TOGETHER

HOW WE CAN IMPROVE OUTCOMES FOR PEOPLE WITH DLD

It is estimated the 7.6% of the population have Developmental Language Disorder (DLD). Despite the high prevalence, DLD remains a largely hidden and misunderstood condition.

Between 2010 to 2019 there were fewer studies of DLD compared to ADHD and autism (1).

Research has found a lack of high-quality content available online to support parents of children who are late to talk (2).

“We need to increase our understanding of the **causes, treatment, and consequences** of this common, but under-researched, developmental disorder.”

Dr Michelle St Clair, University of Bath

Overview

- E-DLD connects individuals affected by DLD to research by:
 - Creating easy-to-read research summaries.
 - Hosting parent and professional events.
 - Collating information about families with DLD over time.
 - Establishing a database of families to help with research and policy decisions.
- Speech and Language Therapists/Pathologists (SLT/Ps) can make individuals with DLD and their families aware of E-DLD.
- Use E-DLD's research summaries to keep abreast of the DLD literature.
- SLT/Ps can connect with E-DLD for their own research purposes.

References;

- (1) McGregor, K. (2020). How We Fail Children With Developmental Language Disorder. *Language Speech and Hearing Services in Schools*, 1–12.
- (2) Coughler, C., M Burke, S., & Cardy, J. O. (2020). Analysis of the quality of online resources for parents of children who are late to talk. *Autism and Developmental Language Impairments*, 5. <https://doi.org/10.1177/2396941520917940>

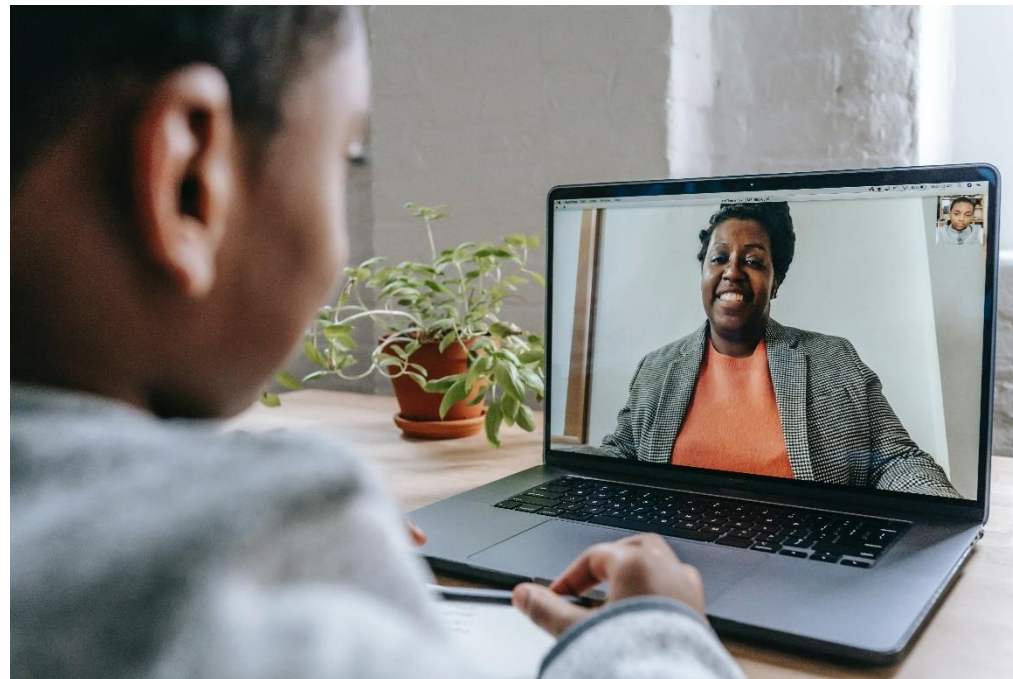
SPEECH AND LANGUAGE THERAPISTS CAN COLLABORATE WITH E-DLD DURING ONGOING RESEARCH PROJECTS

People with DLD or their families sign up to E-DLD forming a valuable database of people affected by DLD.

The E-DLD database includes children between pre-school to secondary school age, as well as adults with DLD.

Those who sign-up to E-DLD receive regular research opportunity emails.

Speech and Language Therapists can apply to E-DLD to advertise ongoing Patient and Public Involvement opportunities to help design research projects.



E-DLD has received ethical approval for allowing Speech and Language Therapy services to advertise PPI consultation opportunities to members indirectly, through it's research opportunity emails.

TO MAKE USE OF E-DLD FOR YOUR SERVICE:

- 1) Visit the easy-read research summaries
- 2) Share E-DLD with your clients
- 3) Attend online events
- 4) Apply to E-DLD to advertise PPI consultation opportunities