

Engage with DLD

Yearly Consultation Project Update

July 2026



Overview of the meeting

1. Introductions
2. Overview the E-DLD project
3. Overview of who is currently involved
4. Are we meeting our first aim of linking people with DLD to researchers?
5. Are we meeting our second aim of improving understanding of DLD research?
6. Are we meeting our third aim of creating new DLD research with E-DLD data?
7. Questions, comments and suggestions



The Engage with DLD team



Dr Michelle
St Clair



Professor Jenny
Gibson



Professor Nicola
Botting



Professor
Suze Leitão

Placement students: Casey Grispin & Ben Greenwood



ECR Research Associates

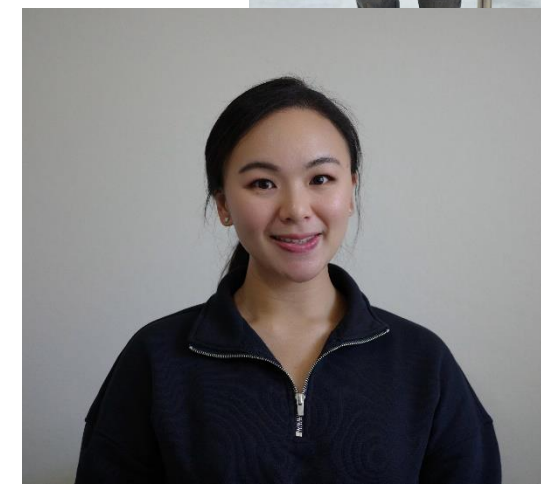
Kyleigh Melville, University of Edinburgh



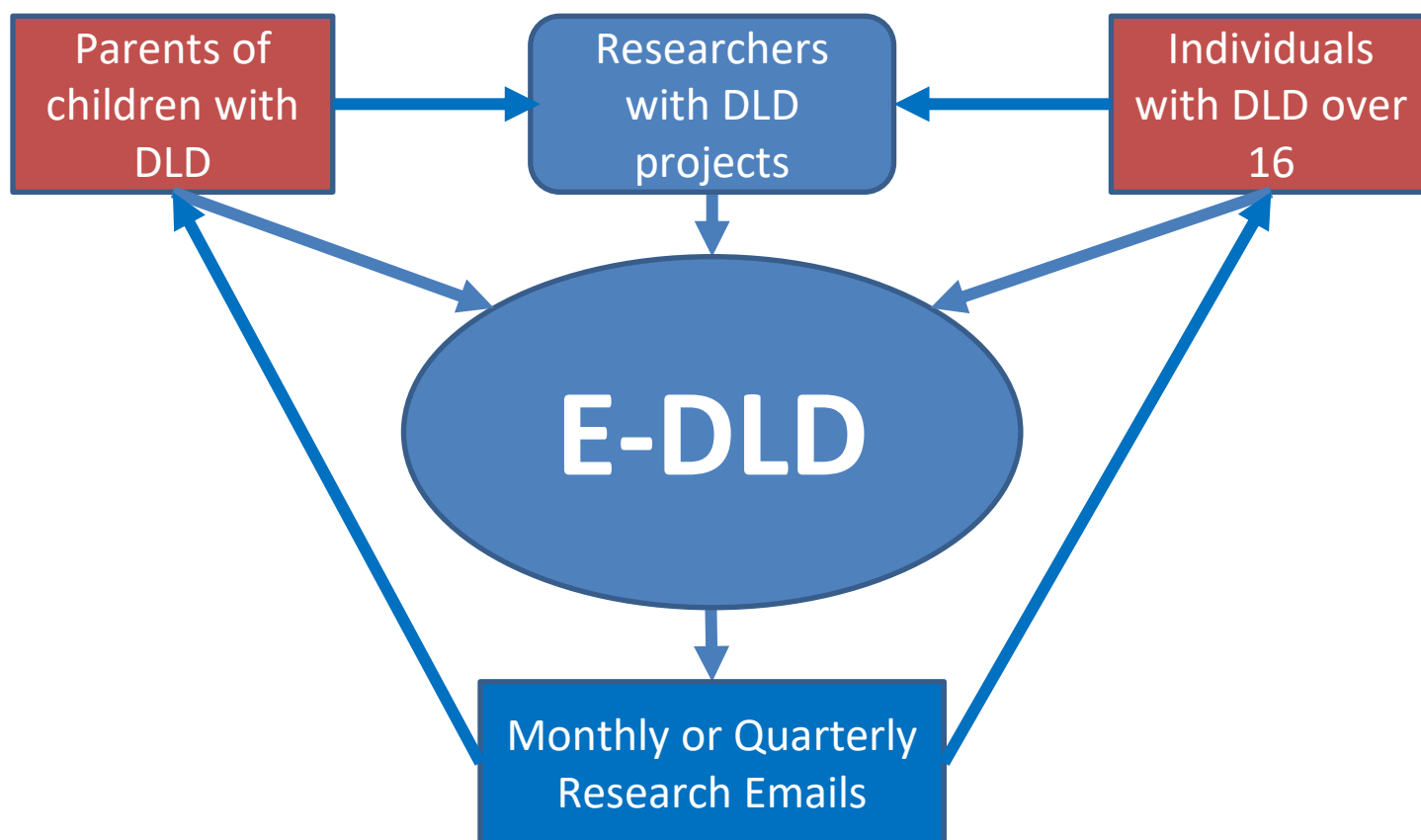
Dr Soon Tat Lee, University of Nottingham Malaysia



Dr Jane Man-Yu Lai, Macquarie University and the
Chinese University of Hong Kong



What is the E-DLD project?



What is the E-DLD project?

Aim 1: Link families and people with DLD to researchers



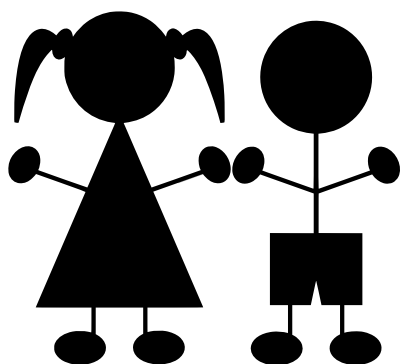
Aim 2: Improve understanding of DLD research



Aim 3: Creating more DLD research

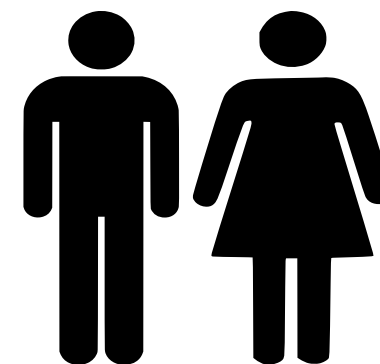
MORE RESEARCH, BETTER UNDERSTANDING,
ENHANCED TREATMENT, IMPROVED OUTCOMES

Who are our E-DLD child (parent) members?

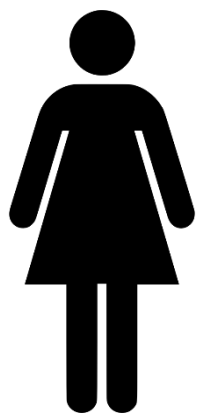


Children

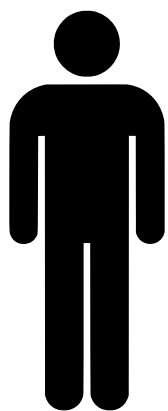
386 families



Parents/caregivers



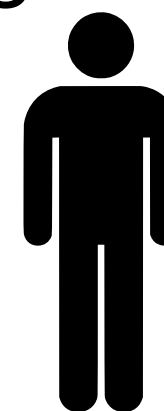
42.8% girls



57.6% boys

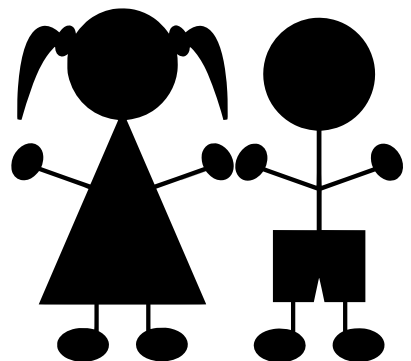


92.7% woman



7.1% men

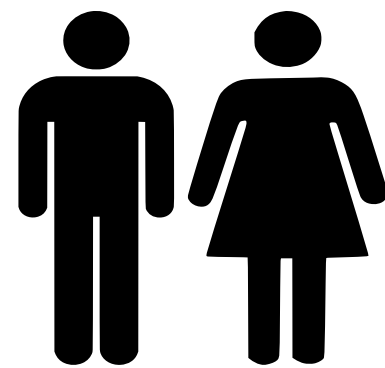
Who are our E-DLD child (parent) members?



Children

8.85 years

Average
Age



Parents

42.38 years

Who are our E-DLD child (parent) members? 68.3% Live in the UK



Who are our E-DLD child (parent) members?

40 families from
North America

6 families from
South America

34 families from New
Zealand/Australia

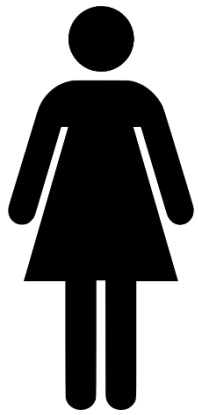


35 families from
Europe (not
including the UK)

1 family from Asia

2 families from
Africa

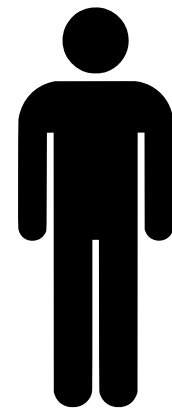
Who are our E-DLD adult members?



77.1% women

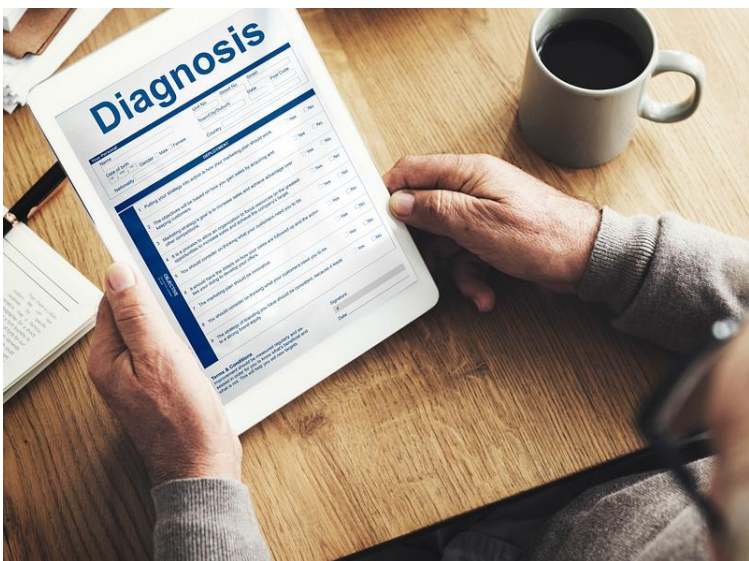
106 Adults

Average age
36.61 years



21.9% men

Who are our E-DLD adult members?



33.0% diagnosed DLD



67.0% Self-identified DLD

Who are our E-DLD adult members? 69.3% Live in the UK



Who are our E-DLD adult members?

14 adults from
North America

0 adults from
South America

7 adults from New
Zealand/Australia



9 adults from
Europe (not
including the UK)

1 adult from Asia

0 adults from
Africa



Who are our E-DLD adult members?

43.7% of adults
with DLD are
parents, with an
average of 2
children





How are we measuring Aim 1 to link individuals/families to DLD research?

We:

- ✓ Look at the number of research projects members engage in
- ✓ Look at the number of projects we've advertised
- ✓ Highlight a current research project currently recruiting

Aim 1: Linking to research projects

36% of parents –
no research
projects yet

43% of adults –
no research
projects yet

48% of parents –
1-2 research
projects

39% of adults –
1-2 research
projects

17% of parents –
3 or more
research projects

17% of adults – 3
or more research
projects



Aim 1: Projects we've advertised

Over the past 6 years, we have advertised 87 research projects recruiting:

- children with DLD
- parents of children with DLD
- adults with DLD



Aim 1: Current Research Projects

Tell us about your experiences at your GP clinic –Ben Greenwood

- Interview study for adults with DLD about how they access healthcare
- Email Ben - bg799@bath.ac.uk



How are we measuring Aim 2 to improve understanding of DLD research?

We:

- ✓ Talk on podcasts e.g. The Talking DLD podcast
- ✓ Put talks on our Youtube channel
- ✓ Publish easy to read summaries of DLD research
- ✓ Promote E-DLD on our Social media
- ✓ Hosting E-DLD events

Aim 2: Podcasts

Talking DLD Podcast

Professor Suze Leitão

The Rewards and Challenges of
Parenting a Child with DLD



The Rewards & Challenges
of Parenting a Child with DLD

With special guest Professor
Suze Leitão from Curtin University.

THE TALKING
DLD
PODCAST



THE REWARDS & CHALLENGES OF
PARENTING A CHILD WITH DLD

[LISTEN NOW »](#)



Aim 2: YouTube



Engage with DLD

@engagewithdld7150 • 160 subscribers • 52 videos

Developmental Language Disorder affects about 1 in 15 people. Despite being as common...more

engage-dld.com and 1 more link

Subscribe

Home Videos Playlists

Videos



Word learning and verbal working memory in children...

▷ 16 2 wk ago



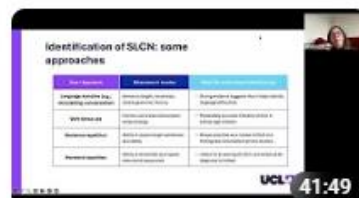
... Professor Saloni Krishnan: Cognitive and neural ...

▷ 34 2 mo ago



... Impact of DLD on mental health and wellbeing across...

▷ 26 2 mo ago



... Dr Taha: Improving outcomes for children with DLD through...

▷ 54 3 mo ago



... How to best deliver a programme about past tens...

▷ 50 4 mo ago



... Making Research Accessible to the Developmental ...

▷ 16 5 mo ago



Aim 2: Accessible Summaries

We have created 137 easy to read summaries of DLD research papers!



How to best deliver a programme about past tense production for children with DLD

Citation Calder, S. D., Claessen, M., Leitão, S., & Ebbels, S. (2021). Evaluating two different dose frequencies and cumulative intervention intensities to improve past tense production for...



Aim 2: Social Media

We are currently on Instagram, Facebook, Threads, Bluesky, YouTube and TikTok!

Use the links (or the QR code) to follow us!



<https://www.facebook.com/EngageDLD>



https://www.instagram.com/engage_dld/



https://www.threads.net/@engage_dld?hl=en



<https://www.youtube.com/@engagewithdld7150>



https://www.tiktok.com/@engage.with.dld?is_from_webapp=1&sender_device=pc



<https://bsky.app/profile/edldproject.bsky.social>



Takes you to Linktree which has all our social media on it



ENGAGE_DLD

Takes you directly to our Instagram account



Aim 2: Upcoming Events

Comparing DLD in the UK and Australia: Current landscape and future priorities

With Dr. Lucy Hughes and Dr. Robert Wells

Dr. Lucy Hughes and Dr. Robert Wells are academic experts who have led significant initiatives to establish DLD research priorities in the UK and Australia, respectively. They are experienced in co-designing initiatives alongside the DLD community, bridging the gap between academic research and the lived experiences of families, practitioners, and individuals affected by DLD.

Date: Thursday 30th July, 2.30pm – 3.30pm (BST) [9.30pm – 10.30pm, AWST]



How are we measuring Aim 3 to create more DLD research?

We:

- ✓ Talk on podcasts e.g. The Talking DLD podcast
- ✓ Publish papers
- ✓ Talk at conferences



Aim 3: Published Papers



International Journal of
Language & Communication Disorders

RESEARCH REPORT | Open Access |

The Engage with Developmental Language Disorder (E-DLD) project: Cohort profile

[Michelle C. St Clair](#) [Jasmine Horsham](#), [Vanessa Lloyd-Esenkaya](#), [Emily Jackson](#), [Jenny Gibson](#), [Suze Leitão](#), [Nicola Botting](#)



International Journal of
Language & Communication Disorders

RESEARCH REPORT | Open Access |

“They don't realise how hard he has to try every day”: The rewards and challenges of parenting a child with developmental language disorder

[Suze Leitão](#) [Michelle C. St Clair](#), [Nicola Botting](#), [Jenny Gibson](#), [Emily Jackson](#)

Who are adults with developmental language disorder? Profiles from the Engage with DLD project

Professor Jenny Gibson¹, Professor Nicola Botting², Ellie Barker³, Dr Emily Jackson⁴, Professor Suze Leitão⁵, Dr Michelle C St Clair*³



Aim 3: Upcoming Papers

Four papers in progress

- Screening tool to identify undiagnosed DLD in adults
- Healthcare in adults with DLD
- Strengths of children with DLD
- Sleep and problem behaviours in children with DLD



Aim 3: Conference Presentations

Three planned conference submissions to the International DLD Research Conference

- Strengths of children with DLD
- Screening tool and language ability
- Screening tool in adults who think they have DLD



Time for your questions, comments and suggestions!

